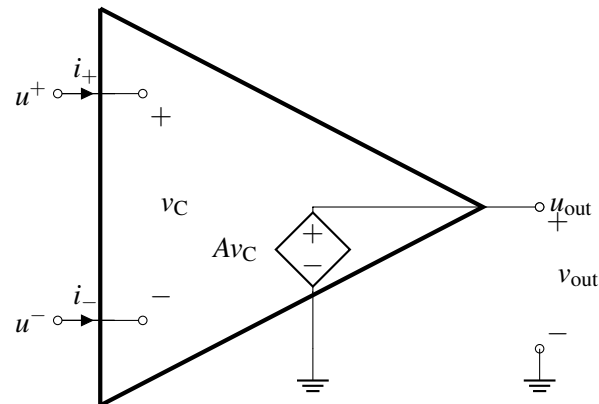


EECS 16A Designing Information Devices and Systems I

Spring 2022 Discussion 10A

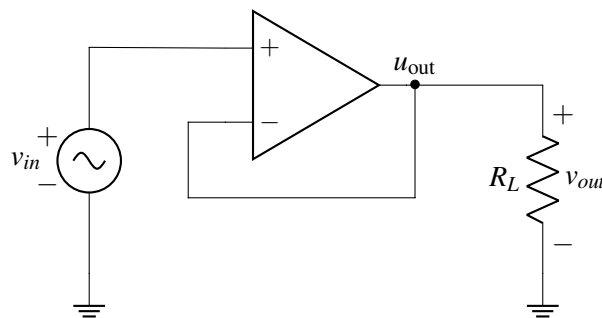
1. Op-Amp Rules

Here is an equivalent circuit of an op-amp (where we are assuming that $V_{SS} = -V_{DD}$) for reference:



- What are the currents flowing into the positive and negative terminals of the op-amp (i.e., what are I^+ and I^-)? Based on this answer, what are some of the advantages of using an op-amp in your circuit designs?
- Suppose we add a resistor of value R_L between u_{out} and ground. What is the value of v_{out} ? Does your answer depend on R_L ? In other words, how does R_L affect Av_C ? What are the implications of this with respect to using op-amps in circuit design?

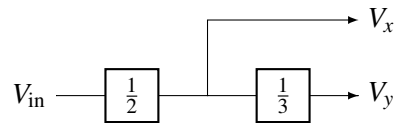
For the rest of the problem, consider the following op-amp circuit in negative feedback:



- Assuming that this is an ideal op-amp, what is v_{out} ?
- Draw the equivalent circuit for this op-amp and calculate v_{out} in terms of A , v_{in} , and R_L for the circuit in negative feedback. Does v_{out} depend on R_L ? What is v_{out} in the limit as $A \rightarrow \infty$?

2. Modular Circuit Buffer

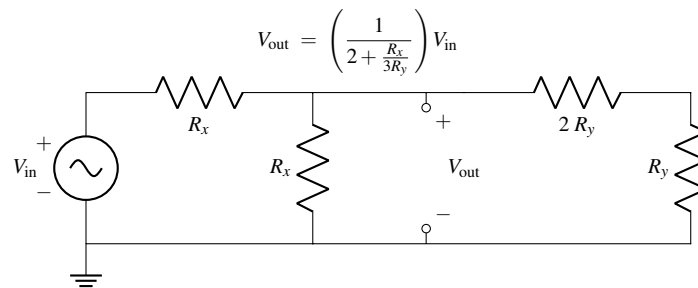
Let's try designing circuits that perform a set of mathematical operations using op-amps. While voltage dividers on their own cannot be combined without altering their behavior, op-amps can preserve their behavior when combined and thus are a perfect tool for modular circuit design. We would like to implement the block diagram shown below:



In other words, create a circuit with two outputs V_x and V_y , where $V_x = \frac{1}{2}V_{in}$ and $V_y = \frac{1}{3}V_x = \frac{1}{6}V_{in}$.

- Draw two voltage dividers, one for each operation (the $1/2$ and $1/3$ scalings). What relationships hold for the resistor values for the $1/2$ divider, and for the resistor values for the $1/3$ divider?
- If you combine the voltage dividers, made in part (a), as shown by the block diagram (output of the $1/2$ voltage divider becomes the source for the $1/3$ voltage divider circuit), do they behave as we hope (meaning $6V_{in} = 3V_x = V_y$)?

HINT: The following circuit and formula may be handy:



- Perhaps we could use an op-amp (in negative-feedback) to achieve our desired behavior. Modify the implementation you tried in part (b) using a negative feedback op-amp in order to achieve the desired V_x, V_y relations $V_x = (1/2)V_{in}$ and $V_y = (1/3)V_x = (1/6)V_{in}$.

HINT: Place the op-amp in between the dividers such that the V_x node is an input into the op-amp, while the source of the 2nd divider is the output of the op-amp!